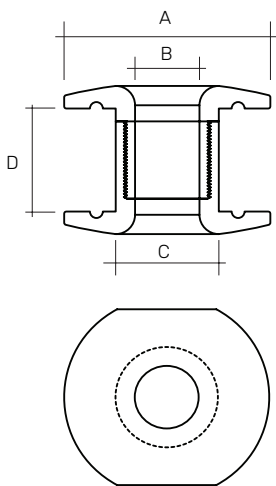


ROPEYE TDP

Always use Through-Deck Pushing when installing the Ropeye in order to prevent the rope and deck from wear and friction.

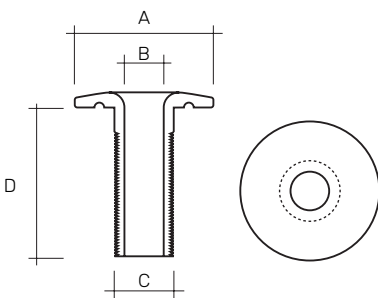


DOUBLE TDP

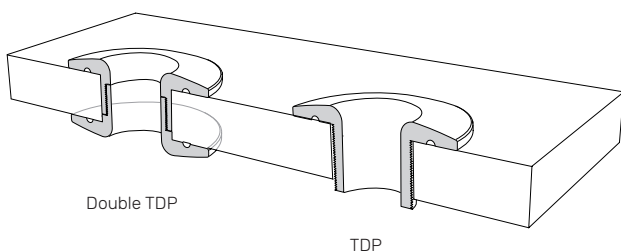


TDP B/D	A Head dia mm	B Inner dia mm	C Outer dia mm	D Length mm	Weight /g	Material
TDP 10/10-12	32	9.5	16	10-12	12.5	Anodised Aluminium
TDP 10/12-16	32	9.5	16	12-16	13	Anodised Aluminium
TDP 10/16-22	32	9.5	16	16-22	15	Anodised Aluminium
TDP 10/22-30	32	9.5	16	22-30	16.5	Anodised Aluminium
TDP10/30-50	32	9.5	16	30-50	17	Anodised Aluminium
TDP 14/10-12	40	12	20	10-12	22.5	Anodised Aluminium
TDP 14/12-16	40	12	20	12-16	23.5	Anodised Aluminium
TDP 14/16-22	40	12	20	16-22	26	Anodised Aluminium
TDP 14/22-30	40	12	20	22-30	29	Anodised Aluminium
TDP 14/30-50	40	12	20	30-50	29.5	Anodised Aluminium
TDP 18/10-12	48	14	24	10-12	35.5	Anodised Aluminium
TDP 18/12-16	48	14	24	12-16	37	Anodised Aluminium
TDP 18/16-22	48	14	24	16-22	40	Anodised Aluminium
TDP 18/22-30	48	14	24	22-30	45	Anodised Aluminium
TDP 18/30-50	48	14	24	30-50	45.5	Anodised Aluminium

TDP



TDP C	A Head dia mm	B Inner dia mm	C Outer dia mm	D Length mm	Weight /g	Material
TDP12	28	8	12	30	8.2	Anodised Aluminium
TDP14	30	10	14	30	10	Anodised Aluminium
TDP16	32	12	16	30	11.5	Anodised Aluminium
TDP18	34	14	18	30	12.3	Anodised Aluminium



© Ropeye is a registered trademark. All rights reserved.
Ropeye technological design is patented.

www.ropeye.com