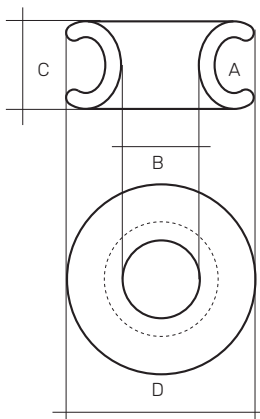
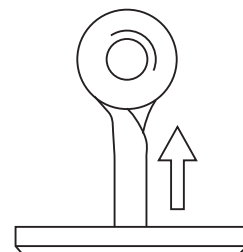
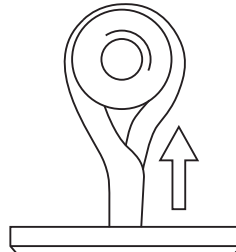
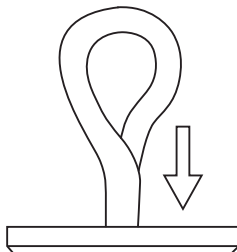


ROPEYE SLR

Ropeye Self-Locking Rings made of Anodised Aluminium are specially designed to lock the rope naturally, inside the ring channel. Ropeye Self-Locking Rings are for single and double braid ropes.



SLR B-A	A Outside dia mm	B Inside dia mm	C Width mm	D Ring dia mm	Weight /g	Material
SLR 10-7	7	10	11	24	5	Aluminium
SLR 14-10	10	14	15	34	13	Aluminium
SLR 20-14	14	20	20	46	30	Aluminium



© Ropeye is a registered trademark. All rights reserved.
Ropeye technological design is patented.

www.ropeye.com